

# LIBERIA EBOLA OUTBREAK

## WASH Cluster Response

### Newsletter



November 2014 | Issue #1

WASH EBOLA AWAY

## WASH National Strategy

WASH interventions constitute a key pillar in the Ebola Virus Disease (EVD) prevention and control. The WASH Cluster strategy for EVD has therefore been prepared in line with;

- WHO Ebola Response Roadmap
- EVD Outbreak, Overview of Needs & Requirements Funding Appeal
- UN Consolidated Response Plan for EVD in Liberia
- The National Strategy and Operational Plan
- WASH Ebola AWAY Strategy of the National WASH Committee

### Scope of the Strategy

National and International WASH humanitarian actors will adopt strategies defined in the WASH strategy document in response to the Ebola outbreak, and will support the 5 objectives of the regional EVD overview and requirement strategy;

1. **STOP EBOLA the outbreak:** Objective: To ensure that infectious waste (liquid and solid) and dead bodies are handled safely, and disposed without risks of EBOLA transmission
2. **TREAT the infected:** Objective: To ensure that the essential WASH package has been provided to the Ebola Care Treatment facilities established by the Health partners.
3. **ENSURE essential services:** Objectives: To ensure that the essential WASH package has been provided to the Non-EVD Health facilities established by the Health partners to populations living in affected areas.  
**PRESERVE stability:** Objective: To ensure at-risk populations in affected districts are reached with Ebola preventive messages through structured social mobilization strategies.
4. **COORDINATE effectively and efficiently:** Objective: To ensure resources are utilized to meet humanitarian needs in a timely and predictable manner, to strengthen partnerships, predictability and accountability by improving prioritization and clearly defining the roles and responsibilities of WASH humanitarian actors.

**3.37 Million**  
Population in Need  
Living in EVD Active  
Transmission Areas

**2 Million**  
People in Need Targeted  
by WASH Cluster

**473.3 Million**  
Overall Funding  
Requirement

**85.5 Millions**  
Funding Requirement  
By WASH Cluster

**35**  
Partners in the WASH  
Sector

### In this issue...

#### National WASH Strategy

Scope of the Strategy  
Response Targets

Page 1

#### Cluster Coordination

National Cluster Coordination Structure  
Sub-National Cluster Coordination Structures  
Information Management

Page 2

#### WASH in ETU & CCC

Construction Phase  
Operation & Maintenance Phase

Page 4

#### WASH Working Groups

ETU & CCC Working Group  
Integrated Assessment Team  
Hygiene Promotion Technical Sub-committee

Page 4

#### UNICEF Contribution

Distribution of Hygiene Kits

Page 5

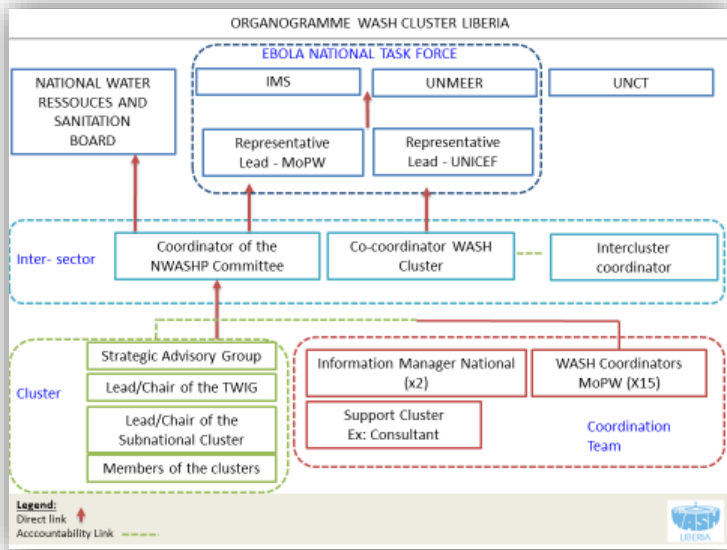
# Cluster Coordination

## National WASH Cluster Activation

In response to the Ebola outbreak in Liberia, the Ministry of Public Works extended the mandate of the National Water Sanitation and Hygiene Promotion Committee in August 2014 to incorporate the cluster approach hence coordinate and realign the priorities and focus in support of the national Ebola response. In September 2014, with the approval of the Resident/Humanitarian Coordinator, UNICEF was designated as the Co-Lead Agency of the WASH Cluster.

### Overarching Objective

To coordinate the WASH response in a consistent, efficient and effective manner to fight against the Ebola Virus Disease outbreak. This will aim to ensure that the response is based on needs assessment, an analysis of the technical and operational gaps in the sector, taking into account the sharing of resources.



### Strengthening National Coordination

Contribute to the general interventions planned by the WASH Cluster for the Ebola response and support the cluster approach to deliver effective WASH humanitarian coordination, preparedness and response

Support the WASH coordination at county level to facilitate decentralized decision-making and shorten response time, adapt standards to local circumstances, work closely with local authorities and international, national and local NGOs, implement the strategic plan, and cross-cutting and strengthen accountability to affected people.

To support scaling up of key WASH technical areas identified by the WASH cluster members, through the development of common strategies, agreement of technical standards and guidelines, identification of opportunities for integration of activities into the work of different sectors, and through joint mobilization of capacity and resources

To empower national and sub-national levels through the increase of their logistic, Human resource and financial capacities, to enhance mentoring sub-national level county WASH teams with the expertise and the capacity existing within government bodies and the NWSHPC.

With the support of Global WASH Cluster (GWC) the National Cluster was further strengthened through the deployment of three rapid response team members, a Cluster co-coordinator, a Sub-national coordinator and an Information management specialist all deployed for 1 month, 2 months and 3 months respectively. Furthermore, with the exit of GWC coordinators, UNICEF has now provided longer term human resource through the recruitment of a UNICEF Cluster co-coordinator to support continuity of established systems and mechanisms for a period of 6 months.

## Sub-National WASH Clusters

The WASH humanitarian coordination has been improved at county level and the response has been adapted to the local context. The improvement of the WASH coordination at sub-national level for the implementation of the EVD response has been a key objective of the National coordination team.

In November 2014, a workshop sponsored by UNICEF was held in Ganta, Nimba County to officially launch WASH sub-national coordination for EVD. The workshop brought together participants from line ministries like MoPW, MoHSW, MoLME, MIA, LWSC, including UN Agencies, WASH Local NGOs and International NGOs. Key outputs included;

- Identification of roles and responsibilities of the various line ministries at county level in the EVD response
- Establishment of WASH coordination meetings for each county by identifying the Chairs, co-chairs, frequency, venue, and membership of each county meeting
- Key information to be collected at county level
- Information sharing mechanisms between National coordination and sub-national coordination



Participants at the Nimba, Sub-national Coordination Launch Workshop

## Strengthening Sub-National Coordination

Further support include;

- Ongoing information management support to sub-national coordination includes Who is doing What Where (4W) database disseminated to WASH coordinator for each county, production of 3W Counties maps, preparation of a National WASH fact sheet featuring county analysis and a WASH newsletter capturing response and coordination at county level
- Increase logistic, human resource capacities at sub-national level (office rental, equipment, transport, funding) for mentoring and coaching the WASH coordinators
- Equip and train teams at county level (GPS, smartphones, internet connection) for real time information sharing and data collection
- A bi-annual WASH sector review process related to EVD with district, county and national representatives. Presentation of activities, successes and challenges, lessons learnt and detailed plans of actions per county

## Information Management

Information Management Strategy for the WASH Cluster has been structured to take into account both the National and County coordination structures in regard to information collection, collation, analysis, mapping and presentation of information to support evidence based decision making at both levels.

### WASH Information Management Strategy

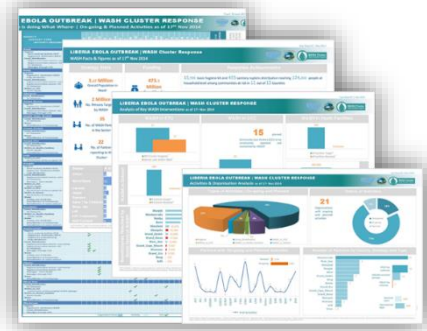
Implementation of the information management strategy for WASH EVD response

- Administration & Management - this includes national, sub-national and TWGs contact lists. Development of National and Su-National calendar of meetings. Minutes taking at national and collation of minutes taken at sub-national level.
- Needs, Assessments & Caseloads - this covers the collation subsequent creation of an inventory of all WASH specific and WASH related assessments on EVD
- Monitoring and Reporting - for the collection, analysis, monitoring of WASH partner response activities and funding. Important for gap analysis.
- Visualisation and Dissemination - mapping of partner operational presence, presentation of analysis and response information using factsheets, newsletters and maps and disseminating then via email and the WASH website
- Capacity Development - to ensure reporting of correct data is provided, ongoing partner support is provided during reporting cycles for sustainable quality reports

### IM Output Products

1. Factsheet – is a presentation of analysis of the overall WASH response. Produced on a bi-weekly basis after the submission of activity and financial reports from partners,

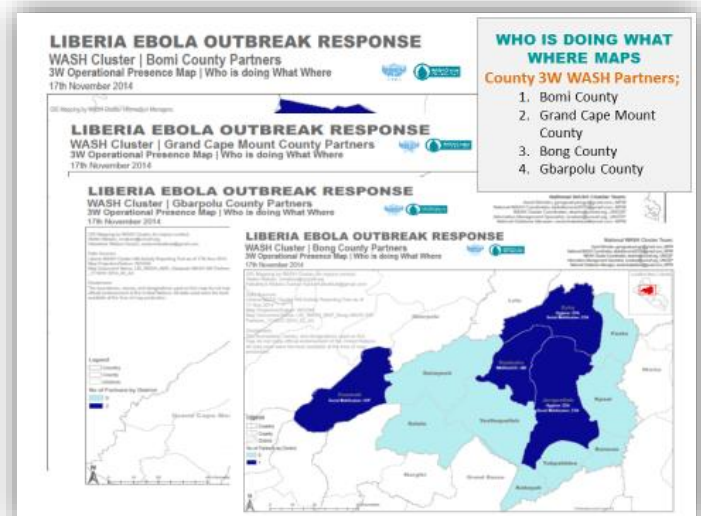
the analysis primarily focuses on showing progress against WASH in Ebola indicators to inform WASH partners and the wider humanitarian community as a whole.



1. Newsletter - covers detailed information on the ongoing WASH EVD response.



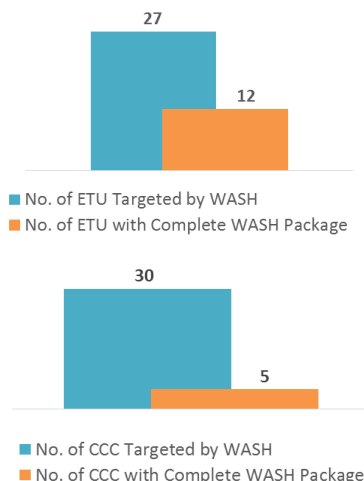
2. Maps | National & County 3W Partner Presence Maps  
The production of the maps take three forms;
  - National 3W map showing who is doing what where for ongoing and planned activities
  - National 3W gap analysis map that combines incidence with partner presence data to show who is doing what where in affected counties
  - County 3W maps show who is doing what where at district level for ongoing and planned activities



## WASH in ETU and CCC

The National Plan is to have 27 ETUs and 23 CCC in the country, all operational by the 1<sup>st</sup> of December 2014. So far 12 ETUs are open and 16 planned, and 7 CCC are opened and 22 planned as of December 15<sup>th</sup>.

WASH in ETU & CCC constitutes two phases; the construction phase followed by the operation and maintenance (O&M) phase. WASH partners



are ensuring the installation of appropriate WASH facilities by providing a comprehensive WASH package that include water supply, excreta disposal, liquid & solid waste disposal, showers & laundry, and hand washing stations in accordance with the established guidance and protocols within ETU, CCC. WASH partners are also working closely with Infection Prevention and Control experts to provide the essential WASH services and facilities required to ensure that medical and non-medical personnel "keep safe and keep serving".

## WASH Working Groups

### ETU & CCC Technical Working Group

The objective of this working group is to coordinate the WASH response in the construction, operation and maintenance of the ETU and CCC. This will ensure that the WASH services are based on needs assessment, analysis of the technical and operational gaps in the sector and the infectious prevention and control measures can be implemented, taking into account the sharing of resources. The TWIG ensures:

- Coordination of WASH response in the ETU & CCC
- Compliance with standards and national strategies for WASH in ETU and CCC
- Monitoring and evaluation of interventions and their effects
- Capacity building on the response to WASH in ETU Technical Planning and guidance
- Coordinating the activities with other active clusters
- Contingency Planning

Funded by USAID/OFDA and ECHO the TWIG is composed of MPW, EPA, MOHSW, LWSC, WHO, UNICEF, UNOPS, IOM, IRC, CARE, SC, WELTHUNGERHILFE. OXFAM and the Cluster Coordinator.

### The Integrated Assessment & Monitoring Team

The assessment team was put together to support the ETU and CCC management team to ensure the compliance of the WASH minimum requirements, identify gaps and mobilize resources for the construction, set-up, operation and management of the WASH facilities. After construction of WASH facilities the integrated assessments team carries out assessment of the ETU or CCC to ensure compliance to the set minimum WASH requirements of all the WASH components. During the O&M phase the integrated assessment team carries out a monitoring visit to evaluation the functionality of the facilities.

The integrated assessment team composed of EPA, MPW, MLME, MOH, MCC, MIA, LWSC, WHO, UNICEF, UNOPS, OXFAM, WASH Cluster. So far 9 ETUs and 3 CCC have already been assessed.

### Hygiene Promotion Technical Sub-committee

The Hygiene promotion technical sub-committee was re-activated on the 2<sup>nd</sup> of December 2014 to coordinate all hygiene activities related to the Ebola response. Chaired by the division of environmental and occupational health and co-chaired by division of health promotion the sub-committee is governed by the National guidelines on hygiene promotion developed by the Ministry of Health & Social Welfare. The objectives of these Guidelines are to provide a framework to allow partners to:

- Create a Positive Policy Implementation Environment: Influence decision makers and opinion leaders and increase mass awareness levels and make the identified audiences more conscious about issues related to appropriate hygiene conditions and behavior.
- Ensure Community Participation and Ownership: Ensure that all households have knowledge of the linkages between water, sanitation, hygiene and health leading to increased public demand for quality water, sanitation services and adoption of hygiene practices.
- Promote Social and Behavioral Change among Families and Communities: Increase the percentage of families and communities that practice appropriate water, sanitation and hygiene behavior by the end of 2017.

### Solid Waste Management Task force

The task force objective is to determine the solid waste management practices and behaviors created by the outbreak at the community level through the MCC key partners; WHO, UNOPS, UNICEF and Liberia WASH Consortium. A key outcome has been rapid assessments of the solid waste management system of Monrovia at community level.

The approach to solid waste management is to reduce the risks and costs associated with handling and transportation by on site disposal and burning.

## UNICEF Hygiene Kit Distribution

21<sup>st</sup> November, in the village of Taylortown in Bong County at least 200 men, women, children, youth, from the community walked into the school building to attend the town meeting. Everyone stopping at the hand washing stations at the entrance to the hall to wash their hands before going in. They had heard from the chief and other leaders in the community that additional support was going to be extended to households that were on quarantine from the beginning of the week. This town had several confirmed positive cases of Ebola, and was placed under a 21 day quarantine. This meeting was about the distribution of the hygiene kit. 123 households in this community received a hygiene kit on that day.

UNICEF in coordination with its partners including Ministry of Public Works (MoPW), Ministry of Health and Social Work (MoHSW), and International NGOs and local NGOs has prioritized complementing hygiene promotion with the distribution of hygiene kits to households in affected communities in support of the current national efforts in the fight against Ebola.

In communities throughout Liberia there are numerous local networks that are the primary stakeholders for water, sanitation and hygiene (WASH) interventions. Building on the strong linkages that implementing partners have had with these local communities, UNICEF is able



*Community member washes his hands before entering the hall for the meetings. Taylortown, Bong County. (Josh Balser, Global Communities)*

to reach out to communities that are hardest to reach with these kits.

Communities that are completely quarantined, don't have a choice to leave to access markets and only have very controlled interactions. Government and partners work together to bring food and supplies into the community. The hygiene kits are considered a support to households to help them to maintain hand washing behaviors with water and chlorine or soap, as well as regular disinfection and house cleaning, during these difficult times. A locally available product is part of the kit to be used as household water treatment, and jerry cans for safe storage of water for diarrhea disease prevention.

Social mobilization is one of the approaches that continues to be used in communities for hygiene promotion in Liberia. Through continued interactions, community dialogues and meetings communities will have increased awareness and knowledge of



*Bong County MoPW official, introduces the contents of the kit to the community. Also in the picture are Global Communities Bong Focal Point, one of UNICEF's Social mobilizers in Bong, and other community members. (UNICEF/Bong/27Nov2014)*

hygiene behaviors and reinforce the adoption of positive behaviors amongst themselves. One of the key infection prevention behaviors is hand washing with water and chlorine at the household level in the fight against hand to hand transmission.

Many of the interactions with the community, like the one on Taylortown, have many partners participating in order to make the most out of the opportunity to disseminate more information and do more awareness raising and community sensitization on Ebola in the hopes to encourage suspected, probable cases to speak out or be identified and seek medical assistance/support.

There have been more than 30,000 household kits that have been distributed to affected communities in Bong, Lofa, Nimba, Margibi, Montserrado, Grand Cape Mount, and River Cess. Partners that have been supporting in engaging communities on hygiene promotion and have established networks in these communities have been ensuring that these kits reached the households that need them. Global Communities, International Federation of the Red Cross (IFRC), as well as CIPORD, LICH, CIS, and CODES are the main implementing partners that have been on the frontlines supporting the dissemination to families.

### WASH Cluster Contacts

George Yargo, WASH Cluster Lead, [georgewkyargo@gmail.com](mailto:georgewkyargo@gmail.com)

Abdul Koroma, WASH National Coordinator, [abdulkoroma2010@gmail.com](mailto:abdulkoroma2010@gmail.com)

Ershad Karim, WASH Cluster Co-coordinator, [ekarim@unicef.org](mailto:ekarim@unicef.org)

Steller Makasi, Information Management Specialist, [smakasi@unicef.org](mailto:smakasi@unicef.org)

Habakkuk Watara, National Database Manager, [sackorhabakkuk@gmail.com](mailto:sackorhabakkuk@gmail.com)

**[ NATIONAL WASH WEBSITE: <http://wash-liberia.org> ]**